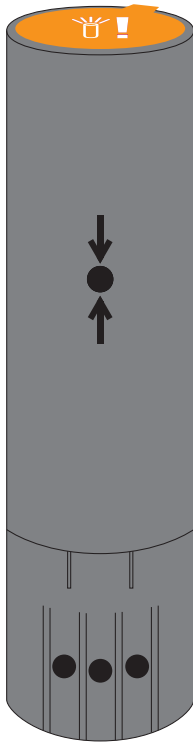


SMAXTEC PH PLUS BOLUS

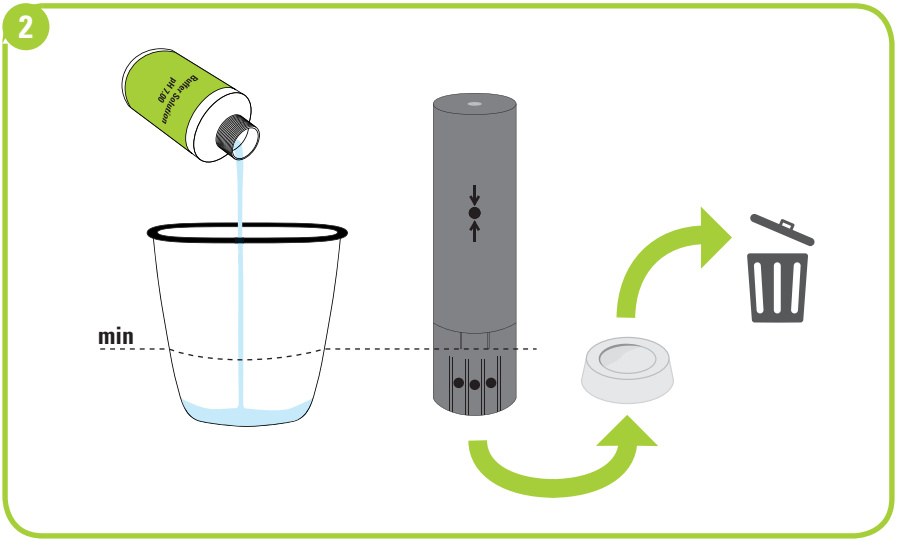
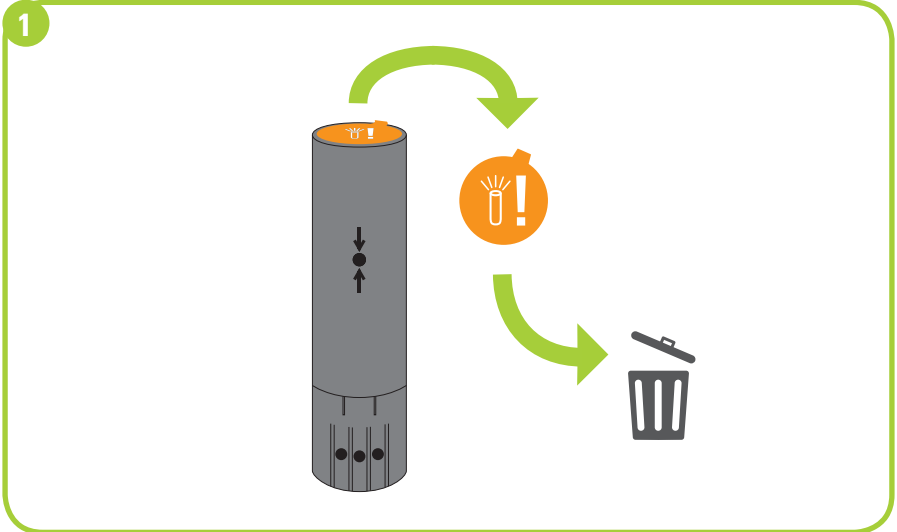
QUICKSTART GUIDE

1. Inhalt | Content | Contenu | Contenido
Conteúdo | محتوى | 内容 | Содержание





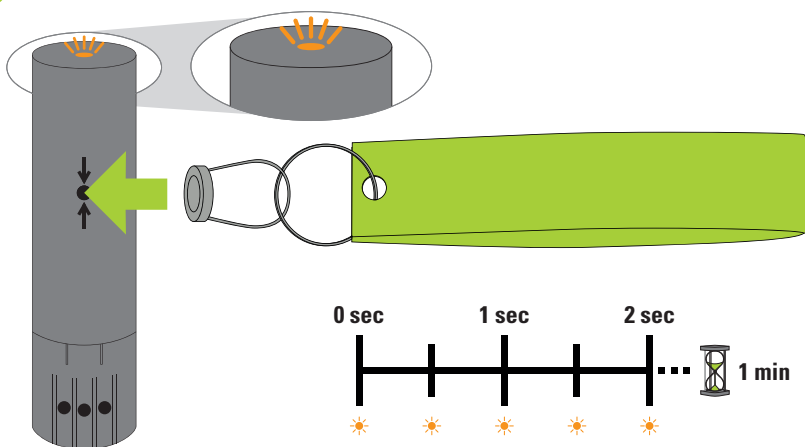
2. Initialisierung | Initialisation | Initialisation | Inicialización
Inicialização | تهيئة | 初始设置 | Инициализация



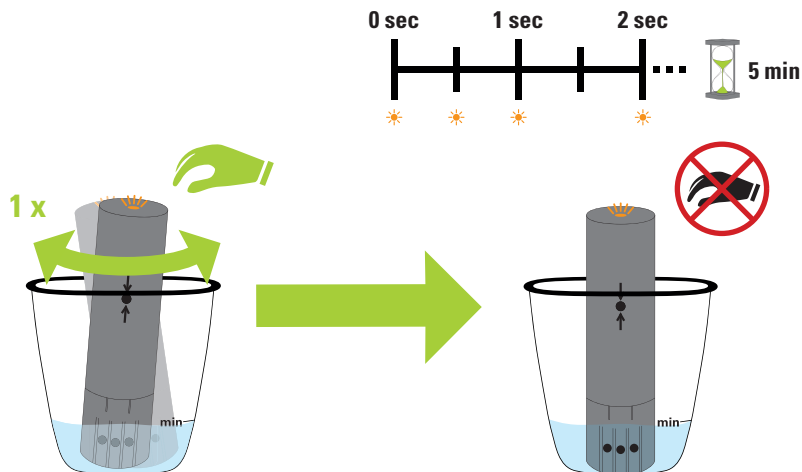


2. Initialisierung | Initialisation | Initialisation | Inicialización
Inicialização | تهيئة | 初始设置 | Инициализация

3a



3b





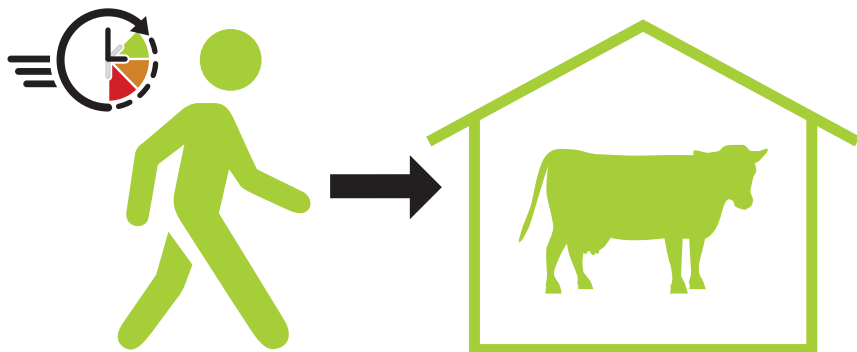
2. Initialisierung | Initialisation | Initialisation | Inicialización
Inicialização | تهيئة | 初始设置 | Инициализация

4a

0 sec 1 sec 2 sec ... 30 min

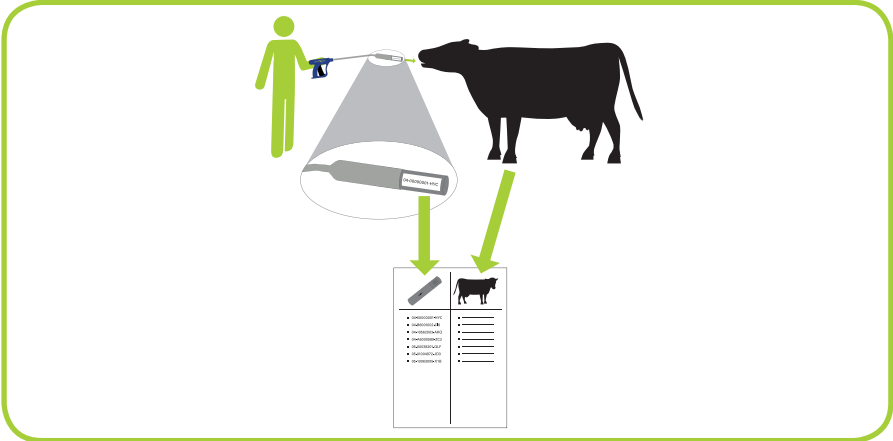
4b

0 sec 1 sec 2 sec ... 30 min



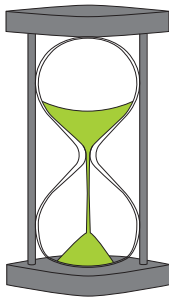
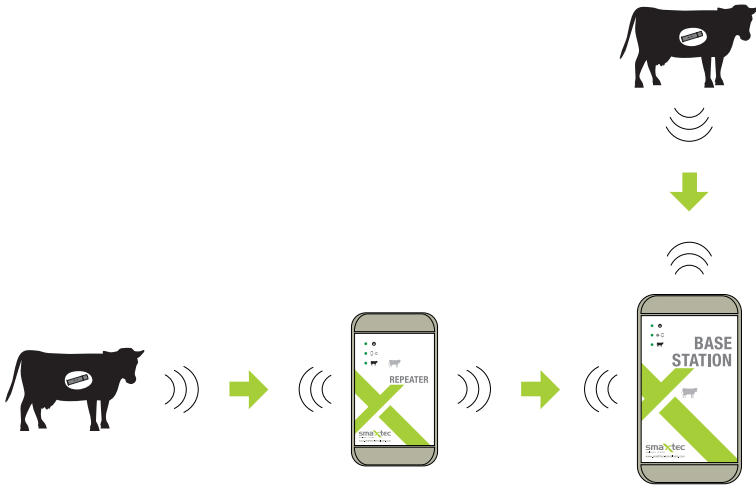


3. Eingabe | Application | Administration | Aplicación
Aplicação | إدخال | 输入 | Ввод данных



4. Aktivierung | Activation | Activation | Activación
Ativação | تفعيل | 激活 | Активация





30 min | دقيقة | МИНУТ | 分钟



messenger.smaXtec.com

smaXtec Support
Belgiergasse 3 | A-8020 Graz | Austria
Phone: +43 316 46 15 88 – 800
Email: support@smaXtec.com